

children's institute

STRENGTHENING SOCIAL AND
EMOTIONAL HEALTH

Our Mission: Joining together to raise every child's complete wellbeing

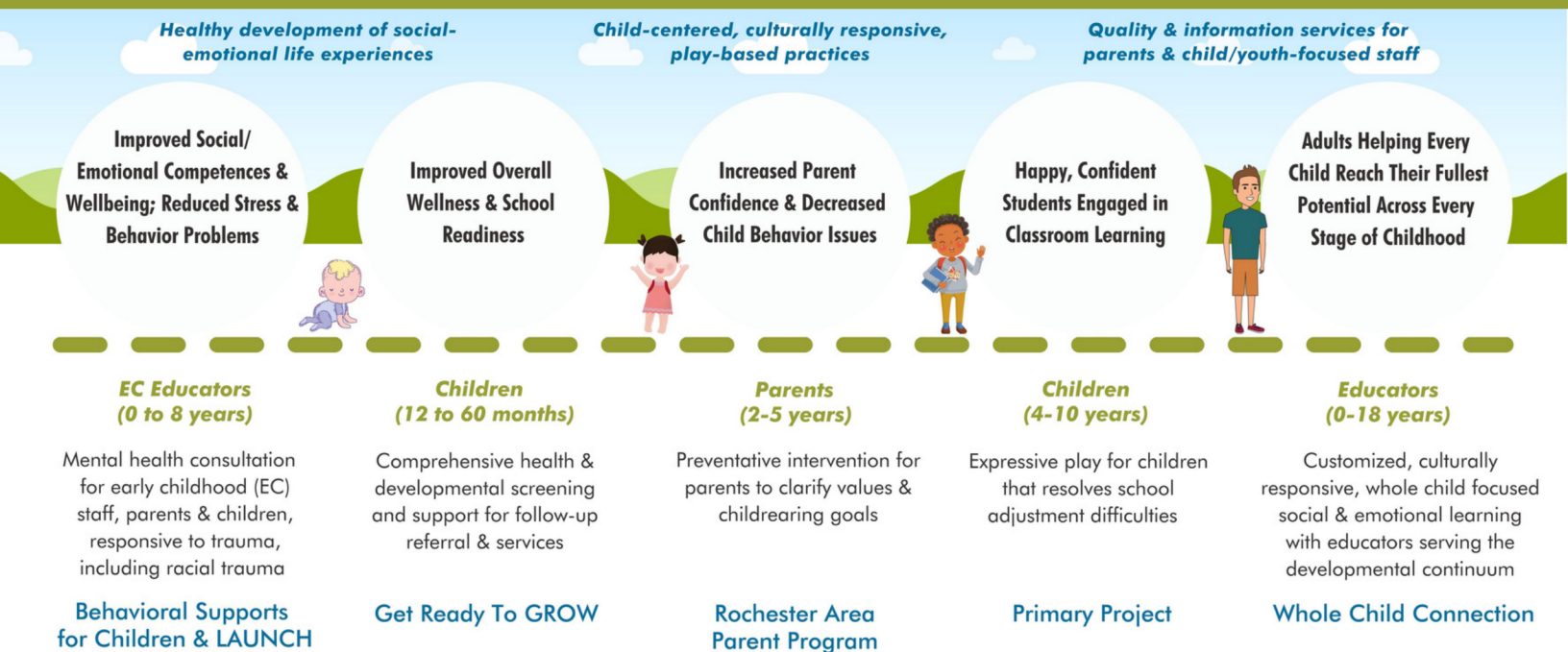


*We foster change with and across
health, human services, education,
and family systems that ensures
children's holistic wellbeing and
creates more racially and socially
just and equitable communities.*

Children's Institute bridges gaps and brings new opportunities, based in research, to support the social-emotional development and holistic wellbeing of infants, children, and youth.

- We work on behalf of children, partnering with their families, schools, human services, health providers, and government agencies.
- We help caring adults rise to challenges in children's growth in a context of structural inequities, local, national, and global stressors, rapid changes in community life, and the effects of the COVID-19 pandemic.
- Together, we lean in to what we know – time-tested practices informed by scholarship, research and data-driven processes adapted culturally - sharing skills and building strong relationships to be resilient in this moment.
- We help children and adults innovate to move forward with confidence and achieve goals for children's development - through proven, preventive strategies and centered on social and emotionally-responsive approaches that raise wellbeing both individually and collectively.

Because Kids Can't Wait



Our Vision: Supportive communities where every family can raise children who thrive as they live, learn, & play.

Our Core Values: Racial & Social Justice, Children & Families First, Transformation with an Engaged Presence, Partnerships are Essential, Interdependence of Research & Practice, Ethical & Responsible Use of Resources



Healthy development of social-emotional life experiences among children and adults

Child-centered and play-based practices that are culturally responsive and relevant

Information and quality enhancements to support children reaching their full potential holistically

PROGRAM SUPPORT • PARTNERSHIPS • SYSTEM CHANGE • COLLECTIVE IMPACT

- Partnering with parents and adults to expand children's skills and strengths in social & emotional wellbeing
- Consultation and training to advance prevention and promotion-oriented program and system solutions
- Incorporating whole child needs universally, applying principles of equity and anti-racism
- Community check-ins and training to support self-care of adults working with children
- Infant mental health service expansion & alignment in health & human service systems within communities
- Community initiative leadership to integrate parents, schools, childcare centers & health care provider views
- Training to help adults respond to racism's effects on children

EDUCATION • HEALTH • HUMAN SERVICES • CHILD CARE • YOUTH DEVELOPMENT • FAMILIES

- Offerings tailored to the unique needs of schools & other child-centered environments - in-person & virtual
- Programs that bridge the digital divide for pre-K & young families with caring, fun, home-based check-ins
- Work with parents together, strengthening relationships with their children
- Behavioral health consultation, opening up discussions of racism and trauma with adults and children
- In-person & virtual screening to comprehensively assess children's developmental and health needs
- Rich, cross-domain community partnerships leveraging existing service and delivery systems
- Services delivered with cultural humility & capacity-building practices

EVALUATION • RESEARCH • CONTINUOUS IMPROVEMENT • TECHNOLOGY INTEGRATION

- Observations and strength-based quality measures that help teachers optimize classroom experiences
- Data integration between school district and child care centers, coordinated with parents and health providers, providing timely checks, referral and follow-up, optimizing opportunities for growth and learning
- Training and support in virtual classroom quality assessment and online play-based therapies for children
- Research, evaluation, publications and continuous improvement processes embedded in real settings
- Community data collection and information development using ethical and secure methods to help families, providers, teachers and communities make decisions and take action
- Practical approaches to help people better visualize & plan systems together to drive and meet specific goals

RECENT INITIATIVES AT CHILDREN'S INSTITUTE



PRIMARY PROJECT

Adaptations to maintain the quality of this unique program during COVID, include guidelines for virtual programs, a focus on relationships, and training using a Learning Management System (LMS) and modular videos.

ROCHESTER AREA PARENT PROGRAM (RAPP)

The Rochester Area Parent Program has implemented the EzParent online learning system from our partners - the Chicago Parent Program - to foster virtual parent learning groups, serving an ever-growing number of parents.

CARING CONNECTIONS

Creating equity in digital access to learning and Pre-K family supports in Rochester in response to challenges caused by the pandemic.

GET READY TO GROW

Our GROW bus for developmental screenings for ages 12 months to 60 months is now in action in our community! GROW checks are also available virtually. We are strengthening integration with pediatric practice workflows, enhancing parent linkage as we leverage our Family Portal in partnership with COMET Informatics, and scaling to new geographies.

RACIAL AND SOCIAL JUSTICE

Children's Institute's strategic direction is anti-racist. Our Racial and Social Justice webpage has resources on how to talk about racism with children, racism as a public health crisis and anti-racism as a core component of social and emotional learning.

BEHAVIORAL SUPPORTS FOR CHILDREN

Supporting family and early childhood education staff wellbeing and stress reduction, improved classroom social-emotional climate and teacher-child relationships, decreased children's behavior problems, and improved social-emotional competence of children and reduced behavioral concerns.

WHOLE CHILD CONNECTION

The Whole Child Connection incorporated explicit content and activities related to exploring SEL within the context of equity and anti-racism. Also the team hosts virtual convenings of youth leaders and adults who support them, focused on the transformative power of genuine relationships.

PROJECT LAUNCH

This project is a community collaboration, including a Young Child Wellness Council of family members, providing effective and innovative early childhood mental health practices and services across community settings to prepare children to thrive in school and beyond.

FOR MORE INFORMATION CONTACT:

Ann Marie White, Ed.D.
Executive Director
amwhite@childrensinstitute.net
(585) 295-1000

WWW.CHILDRENSINSTITUTE.NET